



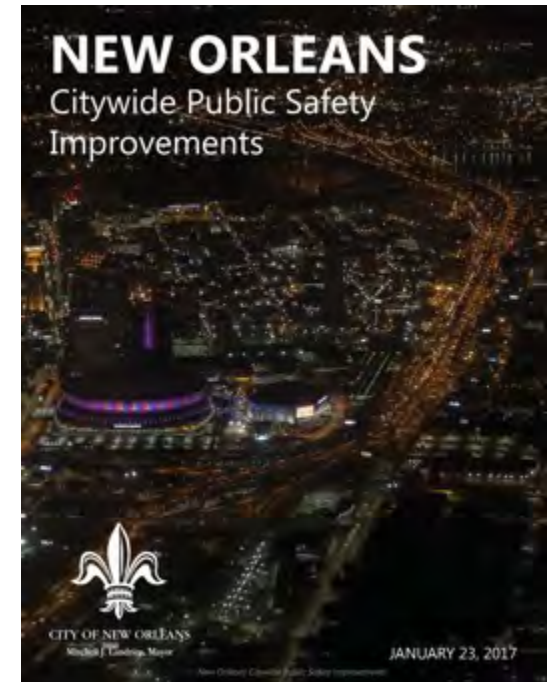
---

City of New Orleans  
**REAL TIME CRIME CENTER**

# Background

---

- Two random acts of violence in Q4 2016 two weeks apart
- Mayor Landrieu decrees cameras needed on Bourbon St. and a monitoring center.
  - \$40 Million public safety plan proposed ([Public Safety Plan](#)) in January of 2017
- Renovations to existing facility began July 2017
- Furniture / Tech move in October 23<sup>rd</sup>, 2017
- Opened for first shift November 23<sup>rd</sup>, 2017
- 24/7/365 Coverage began February 1<sup>st</sup>, 2018



# Initial Installation (Pre-RTCC)

---

- Initial Cameras were hung on Bourbon Street
- Mixture of PANO/PTZ and bullet cameras
- 21 locations overall, with 80+ camera views
- Fiber backhaul to City Hall
- Spans 10 blocks of Bourbon St.
- Installation completed by 2017 NBA All-Star Game (February 9<sup>th</sup>, 2017)



# Our Approach

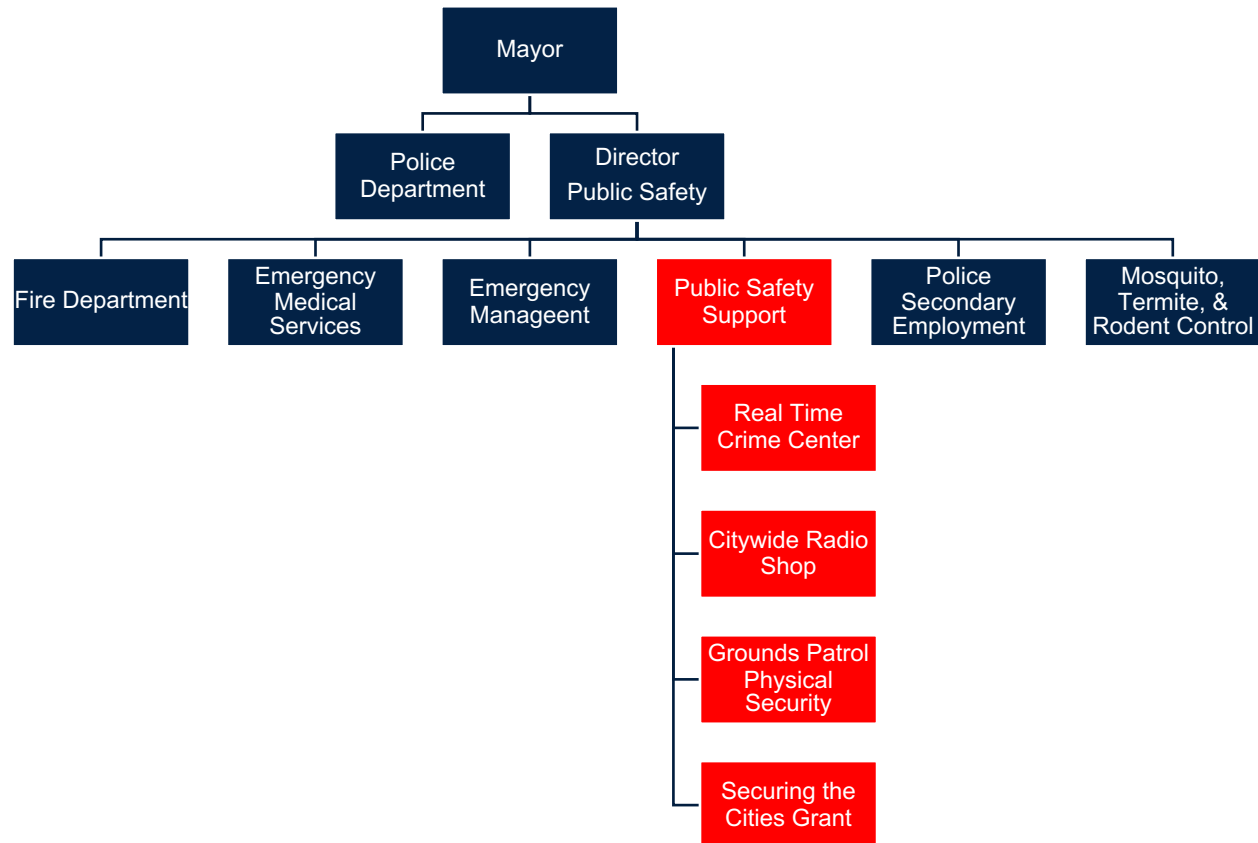
---

- 501 Total Camera locations chosen by NOPD District Command Staff
- Cox Communications Commercial Metro-Ethernet Backhaul (10 Mbps)
- Fiber on Bourbon Street and Lafitte Greenway
- Axis PTZ Camera
  - 30x Zoom / +20 Tilt
  - Speed Dry
  - Full 360 FOV
- Mobile Trailer Deployments
- LPR Deployments



# Organization Structure

---



# Making it All Work

- 100% Civilian Staffed
- Motorola CommandCentral Aware as an integrated solution
  - CAD Data, Camera, Radios, AVL, flood sensors
- Designed to increase efficiency, not directly solve crime
- Genetec Security Center VMS
  - Ability to Federate was key

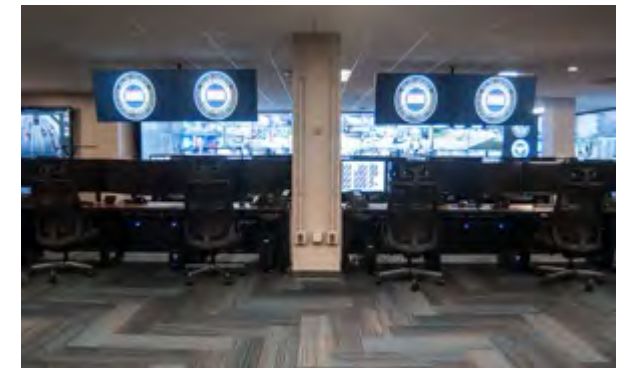






# Making it All Work

- Video is retained for 30 days by City Policy
- Archived footage is preserved by Evidence.com indefinitely
  - Allows for fluid chain of custody as it relates to handling evidence
- Entire IT staff is Certified in both Axis and Genetec
- 3D printing of custom needed parts done in-house





# Beyond Crime Cameras

---

- Sewerage & Water Board installed 10 cameras to monitor frequent flood locations
  - Video captured by RTCC and better notifications are made when flooding occurs
- Sanitation Department installed 10 RTCC Cameras to monitor / deter / enforce illegal dumping
  - Cameras visibly the same as a Crime Camera except capabilities enhanced with Axis Radar
  - Using Q6125-LE PTZ because of lower light identification needs



# Beyond Crime Cameras

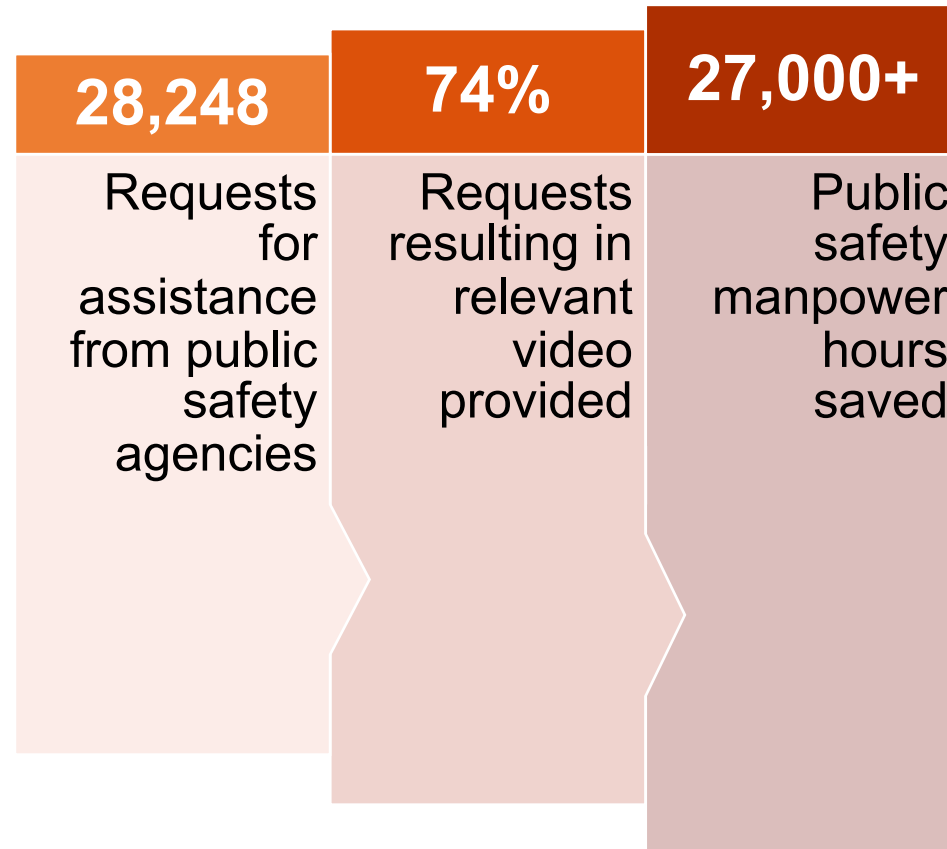
---

- Flood water sensors at critical underpasses also trigger network of cameras
- Lafitte Greenway Linear Park
  - 2.6 miles long
  - Covered by an additional 77 cameras
  - 18 Emergency Call boxes



# Services Provided to Date

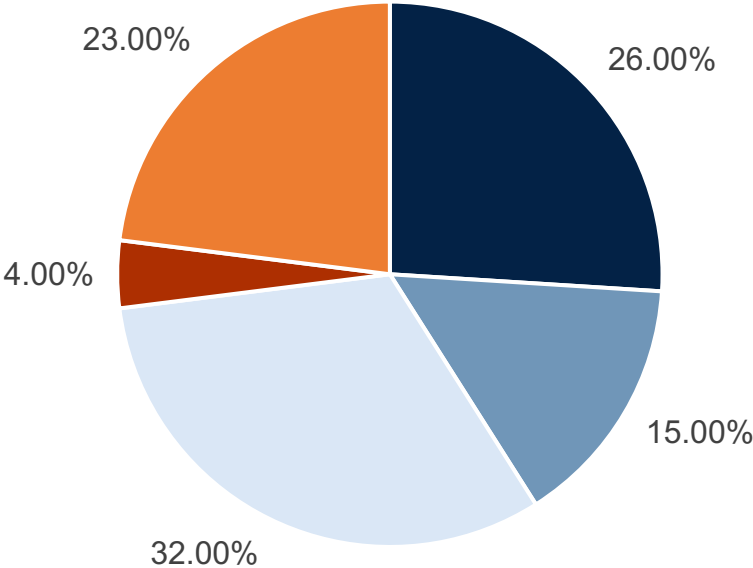
---



# Types of Cases

---

Type of Case



■ Persons Crimes   ■ Property Crimes   ■ Traffic/Vehicle   ■ Weapon/Narcotics   ■ MISC/Quality of Life



# RTCC's Role in Public Safety Efficiency



# SafeCam Platinum

[www.SafeCamNOLA.com](http://www.SafeCamNOLA.com)

---

- Private Sector Integration
- Genetec Security Center Federations
  - Direct Federations (5)
    - National World War II Museum
    - Convention Center
    - DHS Customs House
    - French Market Corporation
    - Housing Authority
  - Stratocast Federations (200+)
    - Residential (154 cameras)
    - Business (296 cameras)





---

City of New Orleans  
**QUESTIONS?**